

Why do I need to be a Full Member ?

Currently, your membership record shows that your membership status is either (a) Provisional or (b) Provisional+System. The latter suggests that you have completed some, but not all of the stages required.

This Provisional (or Provisional + System), is an initial stage whilst all the required checks, actions and requirements are completed. These are necessary so that the appropriate elements of our policy of Keeping Young People Safe, can be fulfilled.

It is expected that all the requirements are completed within six months* of joining or taking on a new role in Scouts. Until the role is Full, there are some restrictions which apply and include the following

- You are unable to have unsupervised access to the young people in your Section, Unit, Group or District. This means that, at all times, you are required to be supervised by another Scout Adult volunteer who has a Full Membership and a current Disclosure (CRB check).
- You will not have access to membership data other than your own.
- You are unable to hold an Adventurous Activity Permit
- You are unable to be assigned an Accreditation

So, getting to Full Membership is an important step so that you can fully support the young people to enjoy Scouting (and also, having some fun yourself).

On the next couple of pages, the required areas and actions are set out for you. If you are not sure what elements you have completed or have remaining, you will need to log into your membership record and from the menu bar, select [My Profile](#) and from there [Roles and Accreditations](#) and then [My Roles](#). This will display any roles that you currently have with Scouts and you will see, under the Status heading if Provisional, Provisional+System or Full. If you then click on the relevant role (this is in blue text), this will open up an Approval Audit which displays the various required elements to membership and if complete or not.

If you have any questions or queries, please do speak to or contact your Default Team Leader; that is your Group Lead Volunteer or District Lead Volunteer.

*some elements must be completed within 30 days from membership. These are submission to the issuing authority for a disclosure (CRB) and completion of safety and safeguarding learning. If not completed within 30 days, restrictions will apply.



Here's what you need to complete in order to be a Full Member

Your Profile

It is important to include all relevant information on your member profile. This includes your personal details together with Emergency Contacts and your Diversity & Inclusion information. If this is not completed, you cannot apply for the criminal record check (CRB).

Welcome Conversation

Within six weeks of joining Scouts, you'll have a Welcome Conversation with your Team Leader and a Welcome Conversation Volunteer. If you have not had that conversation yet, you should ask your default Team Lead

Safety and Safeguarding learning

The safeguarding of young people at Scouts is our number one priority. You must complete your Safety and Safeguarding learning in your first 30 days.

Criminal record check (CRB)

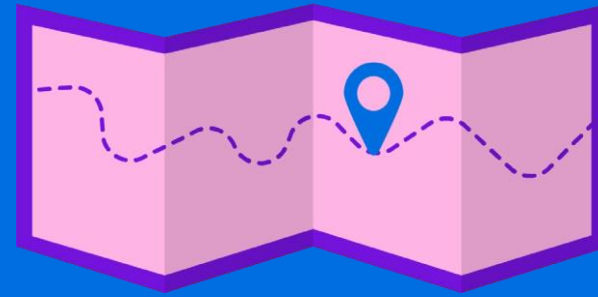
The safeguarding of young people at Scouts is our number one priority. We have a few steps to follow to make sure only appropriately checked adults can volunteer with us, including a criminal record check. You must submit your criminal record check within 30 days of joining and will need to talk to your Default Team Lead (Group Lead Volunteer, District Lead Volunteer) about completing this.

Internal check

This is when our UK Headquarters will automatically check a new volunteer's name against internal records.

Declaration

You'll need to complete a declaration for each role in Scouts. It involves accepting Scout values, and agreeing to follow Scout policies and complete the learning required. You'll have to agree to the declaration when you first sign into scouts.org.uk.



References

We'll ask you for contact information of people who can vouch for your character and suitability to work with children when you first join. This is one of our measures we take to keep young people safe. When you're asked to provide their details, you'll then have six weeks to do so.

Growing Roots

This is the learning you'll need to do within your first six months as a new volunteer or when you start a new role. It covers the basics of Scouts, delivering a quality programme, data protection and creating an inclusive environment. To find out exactly what you need to complete, you will need to access the My Learning area of your membership.

Questions

If you have any questions regarding this information or the requirements set out here, please speak with or contact your Default Team Leader; your Group Lead Volunteer or District Lead Volunteer.



The volunteer joining journey

Joining anywhere new can be daunting. We want to make sure you feel equipped and ready to get stuck into volunteering at your own pace.



Begin your volunteer joining journey.

